

Patient outcomes

Date ready for care to episode start

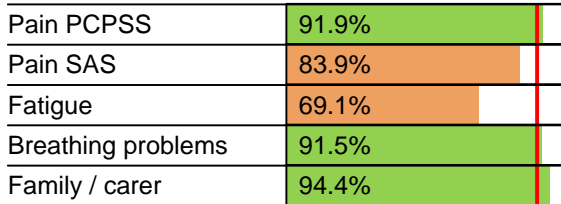


Time in unstable phase

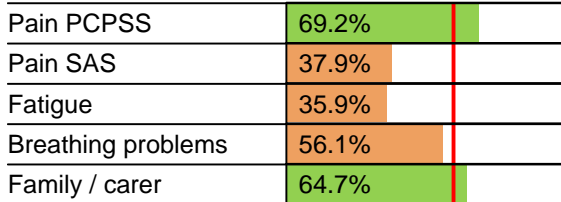


Symptoms & problems

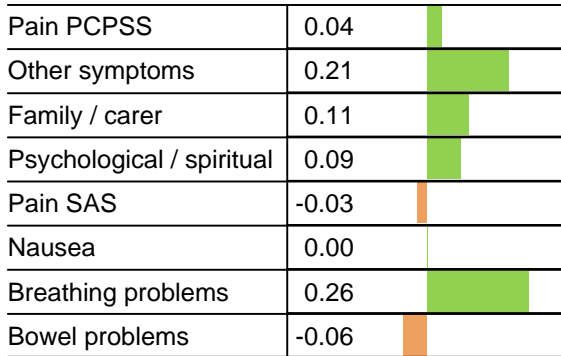
Anticipatory Care



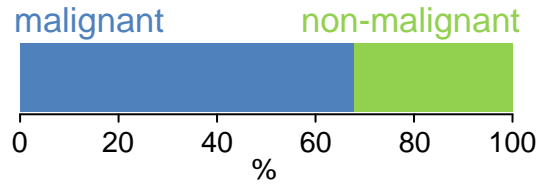
Responsive Care



Casemix adjusted outcomes



Diagnosis

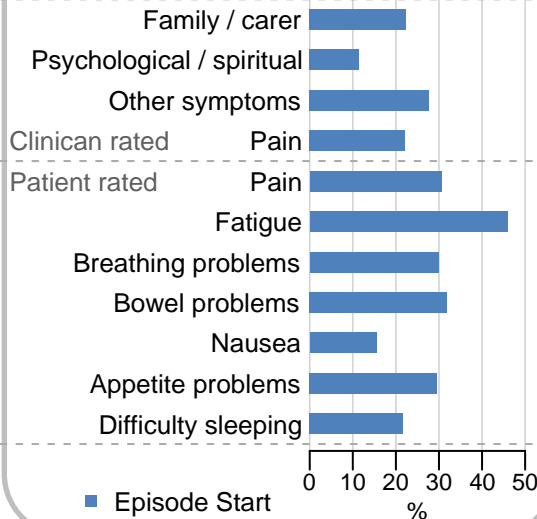


Age at episode start

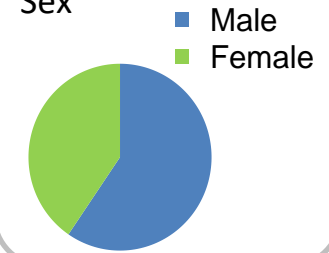
Mean: **77.1**
Median: **78.0**

Symptoms & problems

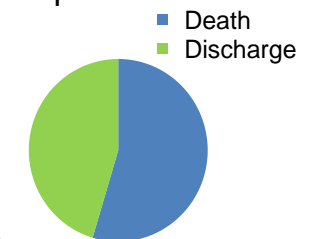
proportion of moderate / severe scores



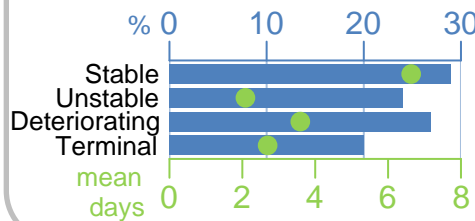
Sex



Episode end



Phase % and mean length in days

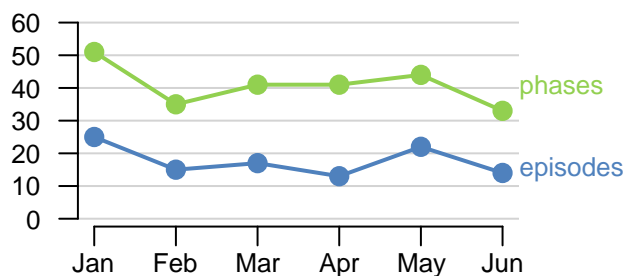


Phases per episode

2.2

Volume of data

Patients: **84**
Episodes: **108**
Phases: **245**



Episode length in days

Mean: **9.5**
Median: **5.0**

